

QCS Laboratory Auditing and The On-Line System
for The Monthly Proficiency Testing Program

NALMA, June 16, 2008

Niagara Falls, New York



Paul Sauvé

Canadian Lab Services

Capital Lab Services

Ottawa, Ontario, CA

jpsauve@bellnet.ca

Laboratory Certification

The title is positioned at the top left of the page. Below it, there are three horizontal bars of varying lengths and shades of blue, extending from the left edge towards the right side of the page.

Laboratory Certification

- Certified laboratories must meet the requirements of the auditing guidelines established by the *Council on Dairy Cattle Breeding (CDCB)*.

Laboratory Certification

- Certified laboratories must meet the requirements of the auditing guidelines established by the *Council on Dairy Cattle Breeding (CDCB)*.
- Conformance is assessed during on-site audits conducted every two years.

Laboratory Certification

- Certified laboratories must meet the requirements of the auditing guidelines established by the *Council on Dairy Cattle Breeding (CDCB)*.
- Conformance is assessed during on-site audits conducted every two years.
- Analytical performance is assessed on an ongoing basis via the monthly “samples unknown” program.

Laboratory Certification

- Certified laboratories must meet the requirements of the auditing guidelines established by the *Council on Dairy Cattle Breeding (CDCB)*.
- Conformance is assessed during on-site audits conducted every two years.
- Analytical performance is assessed on an ongoing basis via the monthly “samples unknown” program.
- *Quality Certification Services (QCS)* coordinates laboratory certification with the help of external contractors.

Laboratory Certification

- Certified laboratories must meet the requirements of the auditing guidelines established by the *Council on Dairy Cattle Breeding (CDCB)*.
- Conformance is assessed during on-site audits conducted every two years.
- Analytical performance is assessed on an ongoing basis via the monthly “samples unknown” program.
- *Quality Certification Services (QCS)* coordinates laboratory certification with the help of external contractors.
- Similar certification systems are in place for field services, meter centers and data processing centers.

Levels of Certification



Levels of Certification



- Laboratories failing to satisfy the *CDCB* guidelines risk loss of certification.

Levels of Certification



- Laboratories failing to satisfy the *CDCB* guidelines risk loss of certification.

Certification: All *CDCB* guidelines satisfied.

Levels of Certification

- Laboratories failing to satisfy the *CDCB* guidelines risk loss of certification.

Certification: All *CDCB* guidelines satisfied.

Conditional Certification: Most *CDCB* Guidelines satisfied. Minor deficiencies need to be corrected prior to an established deadline.

Levels of Certification

- Laboratories failing to satisfy the *CDCB* guidelines risk loss of certification.

Certification: All *CDCB* guidelines satisfied.

Conditional Certification: Most *CDCB* Guidelines satisfied. Minor deficiencies need to be corrected prior to an established deadline.

Provisional Certification: Several *CDCB* guidelines not satisfied calling into question the reliability of the analytical data. *

Levels of Certification

- Laboratories failing to satisfy the *CDCB* guidelines risk loss of certification.

Certification: All *CDCB* guidelines satisfied.

Conditional Certification: Most *CDCB* Guidelines satisfied. Minor deficiencies need to be corrected prior to an established deadline.

Provisional Certification: Several *CDCB* guidelines not satisfied calling into question the reliability of the analytical data. *

Decertification: Provisional laboratories showing no effort and/or making no progress.

Levels of Certification

- Laboratories failing to satisfy the *CDCB* guidelines risk loss of certification.

Certification: All *CDCB* guidelines satisfied.

Conditional Certification: Most *CDCB* Guidelines satisfied. Minor deficiencies need to be corrected prior to an established deadline.

Provisional Certification: Several *CDCB* guidelines not satisfied calling into question the reliability of the analytical data. *

Decertification: Provisional laboratories showing no effort and/or making no progress.

- In all cases, *QCS* works closely with the laboratory staff to achieve and maintain full certification.

Constant Improvement



Constant Improvement



- The *CDCB* guidelines are regularly updated to ensure increased reliability in DHI test data.

Constant Improvement



- The *CDCB* guidelines are regularly updated to ensure increased reliability in DHI test data.
- Some recent additions/changes:

Constant Improvement

- The *CDCB* guidelines are regularly updated to ensure increased reliability in DHI test data.
- Some recent additions/changes:
 - mandatory use of the “B” fat filter;

Constant Improvement

- The *CDCB* guidelines are regularly updated to ensure increased reliability in DHI test data.
- Some recent additions/changes:
 - mandatory use of the “B” fat filter;
 - full formal documentation of all lab procedures;

Constant Improvement

- The *CDCB* guidelines are regularly updated to ensure increased reliability in DHI test data.
- Some recent additions/changes:
 - mandatory use of the “B” fat filter;
 - full formal documentation of all lab procedures;
 - increased emphasis on records associated with instrument maintenance and reagent preparation;

Constant Improvement

- The *CDCB* guidelines are regularly updated to ensure increased reliability in DHI test data.
- Some recent additions/changes:
 - mandatory use of the “B” fat filter;
 - full formal documentation of all lab procedures;
 - increased emphasis on records associated with instrument maintenance and reagent preparation;
 - pilot sample preparation logs and uniformity checks;

Constant Improvement

- The *CDCB* guidelines are regularly updated to ensure increased reliability in DHI test data.
- Some recent additions/changes:
 - mandatory use of the “B” fat filter;
 - full formal documentation of all lab procedures;
 - increased emphasis on records associated with instrument maintenance and reagent preparation;
 - pilot sample preparation logs and uniformity checks;
 - reduction in tolerances for MD and SDD in the samples unknown program.

Constant Improvement:



Constant Improvement:



- Even fully certified laboratories can do better. Lab Managers and staff are expected to evaluate and upgrade their quality system on an ongoing basis.

Constant Improvement:



- Even fully certified laboratories can do better. Lab Managers and staff are expected to evaluate and upgrade their quality system on an ongoing basis.
- During on-site audits, lab staff are generally provided with a number of suggestions related to potential improvements.

Constant Improvement:



- Even fully certified laboratories can do better. Lab Managers and staff are expected to evaluate and upgrade their quality system on an ongoing basis.
- During on-site audits, lab staff are generally provided with a number of suggestions related to potential improvements.
- If these specific areas are not addressed by the next on-site audit, the lab status may be downgraded to conditionally certified until corrective measures are implemented.

CDCB Auditing Guidelines for Laboratories

The title is positioned at the top left of the slide. Below it, there are three horizontal bars of varying lengths and shades of blue, extending from the left edge of the slide towards the right. The top bar is the longest and darkest blue, the middle bar is shorter and a medium blue, and the bottom bar is the shortest and a lighter blue.

CDCB Auditing Guidelines for Laboratories

The title is positioned at the top left. Below it are three horizontal bars of varying lengths and shades of blue, extending from the left edge of the slide towards the right.

Lab Manager Training

CDCB Auditing Guidelines for Laboratories

Two horizontal bars of different shades of blue, one darker than the other, extending across the top of the slide.

Lab Manager Training

Technician Training

CDCB Auditing Guidelines for Laboratories

Two horizontal bars in shades of blue, one darker than the other, extending across the top of the slide.

Lab Manager Training

Technician Training

Lab Documentation

CDCB Auditing Guidelines for Laboratories



Lab Manager Training

Technician Training

Lab Documentation

General Record Keeping

CDCB Auditing Guidelines for Laboratories



Lab Manager Training

Technician Training

Lab Documentation

General Record Keeping

Equipment Maintenance

CDCB Auditing Guidelines for Laboratories



Lab Manager Training

Technician Training

Lab Documentation

General Record Keeping

Equipment Maintenance

Sample Handling / Preparation

CDCB Auditing Guidelines for Laboratories



Lab Manager Training

Technician Training

Lab Documentation

General Record Keeping

Equipment Maintenance

Sample Handling / Preparation

Temperature Monitoring / Control

CDCB Auditing Guidelines for Laboratories



Lab Manager Training

Technician Training

Lab Documentation

General Record Keeping

Equipment Maintenance

Sample Handling / Preparation

Temperature Monitoring / Control

Lab Supplies / Reagents

CDCB Auditing Guidelines for Laboratories



Lab Manager Training

Technician Training

Lab Documentation

General Record Keeping

Equipment Maintenance

Sample Handling / Preparation

Temperature Monitoring / Control

Lab Supplies / Reagents

Analytical Performance

CDCB Auditing Guidelines for Laboratories



Lab Manager Training

Basic Lab QC

Technician Training

Lab Documentation

General Record Keeping

Equipment Maintenance

Sample Handling / Preparation

Temperature Monitoring / Control

Lab Supplies / Reagents

Analytical Performance

CDCB Auditing Guidelines for Laboratories

Lab Manager Training

Basic Lab QC

Technician Training

Pre-calibration Checks

Lab Documentation

General Record Keeping

Equipment Maintenance

Sample Handling / Preparation

Temperature Monitoring / Control

Lab Supplies / Reagents

Analytical Performance

CDCB Auditing Guidelines for Laboratories

Lab Manager Training

Basic Lab QC

Technician Training

Pre-calibration Checks

Lab Documentation

Calibration checks / Adjustments

General Record Keeping

Equipment Maintenance

Sample Handling / Preparation

Temperature Monitoring / Control

Lab Supplies / Reagents

Analytical Performance

CDCB Auditing Guidelines for Laboratories

Lab Manager Training

Basic Lab QC

Technician Training

Pre-calibration Checks

Lab Documentation

Calibration checks / Adjustments

General Record Keeping

Repeatability Checks

Equipment Maintenance

Sample Handling / Preparation

Temperature Monitoring / Control

Lab Supplies / Reagents

Analytical Performance

CDCB Auditing Guidelines for Laboratories

Lab Manager Training

Basic Lab QC

Technician Training

Pre-calibration Checks

Lab Documentation

Calibration checks / Adjustments

General Record Keeping

Repeatability Checks

Equipment Maintenance

Zero Drift / Stability

Sample Handling / Preparation

Temperature Monitoring / Control

Lab Supplies / Reagents

Analytical Performance

CDCB Auditing Guidelines for Laboratories

Lab Manager Training

Technician Training

Lab Documentation

General Record Keeping

Equipment Maintenance

Sample Handling / Preparation

Temperature Monitoring / Control

Lab Supplies / Reagents

Analytical Performance

Basic Lab QC

Pre-calibration Checks

Calibration checks / Adjustments

Repeatability Checks

Zero Drift / Stability

Pilot sample collection

CDCB Auditing Guidelines for Laboratories

Lab Manager Training

Technician Training

Lab Documentation

General Record Keeping

Equipment Maintenance

Sample Handling / Preparation

Temperature Monitoring / Control

Lab Supplies / Reagents

Analytical Performance

Basic Lab QC

Pre-calibration Checks

Calibration checks / Adjustments

Repeatability Checks

Zero Drift / Stability

Pilot sample collection

Pilot sample Uniformity

CDCB Auditing Guidelines for Laboratories

Lab Manager Training

Technician Training

Lab Documentation

General Record Keeping

Equipment Maintenance

Sample Handling / Preparation

Temperature Monitoring / Control

Lab Supplies / Reagents

Analytical Performance

Basic Lab QC

Pre-calibration Checks

Calibration checks / Adjustments

Repeatability Checks

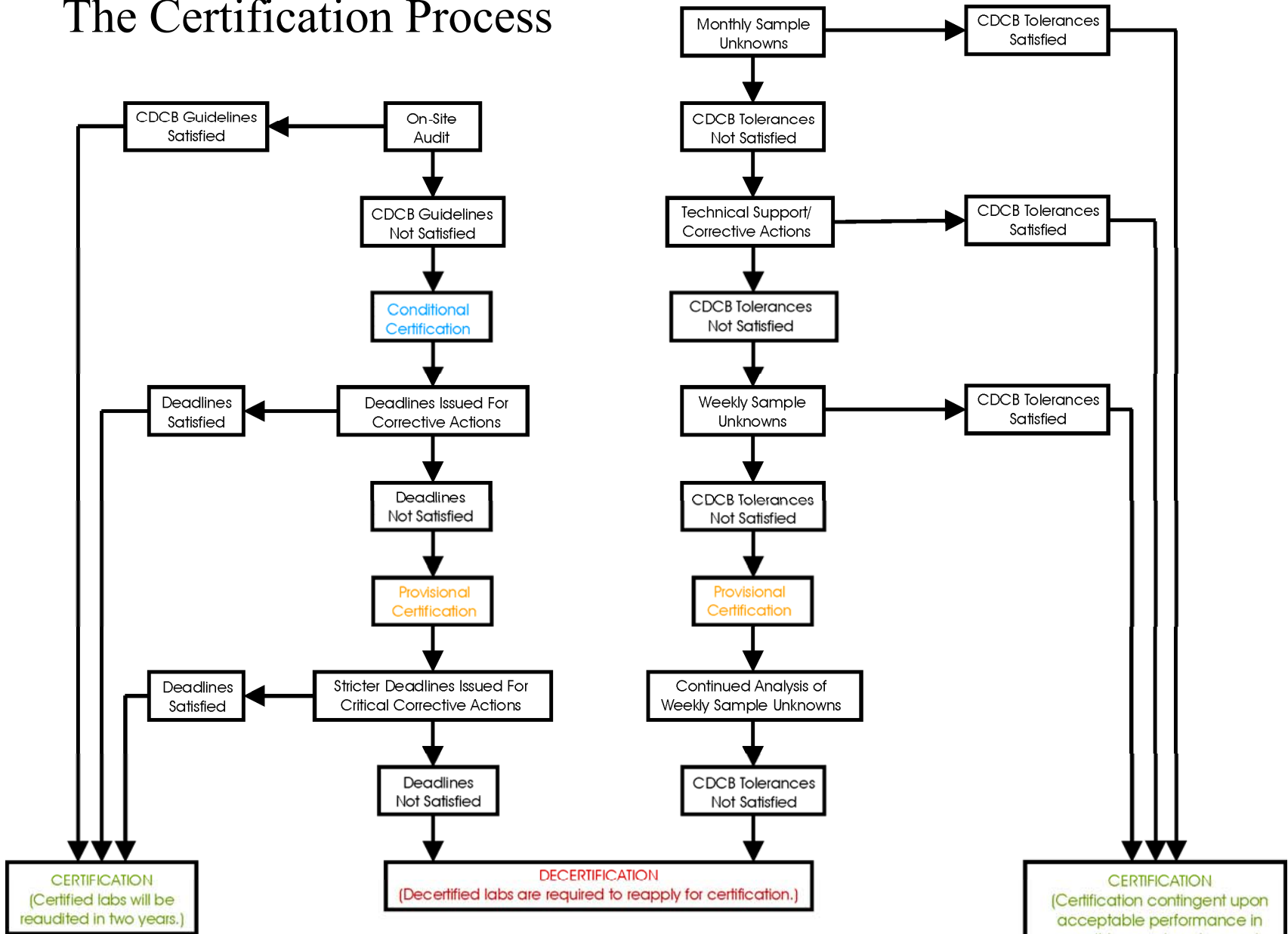
Zero Drift / Stability

Pilot sample collection

Pilot sample Uniformity

Hourly Control Samples

The Certification Process



Monthly Proficiency Testing - “Samples Unknown

Three horizontal bars of varying lengths and shades of blue, extending from the left edge of the slide towards the right. The top bar is the longest and darkest blue, the middle bar is shorter and medium blue, and the bottom bar is the shortest and lightest blue.

Monthly Proficiency Testing - “Samples Unknown

- 24 duplicate samples circulated to all laboratories.

Monthly Proficiency Testing - “Samples Unknown

- 24 duplicate samples circulated to all laboratories.
- Sample are shipped by overnight courier on Monday and received in labs on Tuesday.

Monthly Proficiency Testing - “Samples Unknown

- 24 duplicate samples circulated to all laboratories.
- Sample are shipped by overnight courier on Monday and received in labs on Tuesday.
- Deadline for submission of results is midnight on Friday.

Monthly Proficiency Testing - “Samples Unknown

- 24 duplicate samples circulated to all laboratories.
- Sample are shipped by overnight courier on Monday and received in labs on Tuesday.
- Deadline for submission of results is midnight on Friday.
- Data analysis is completed and reports are ready to be retrieved on the following Monday.

Monthly Proficiency Testing - “Samples Unknown

- 24 duplicate samples circulated to all laboratories.
- Sample are shipped by overnight courier on Monday and received in labs on Tuesday.
- Deadline for submission of results is midnight on Friday.
- Data analysis is completed and reports are ready to be retrieved on the following Monday.
- Data submission and retrieval of reports is done using a secure web site.

Monthly Proficiency Testing - “Samples Unknown

- 24 duplicate samples circulated to all laboratories.
- Sample are shipped by overnight courier on Monday and received in labs on Tuesday.
- Deadline for submission of results is midnight on Friday.
- Data analysis is completed and reports are ready to be retrieved on the following Monday.
- Data submission and retrieval of reports is done using a secure web site.

www.quality-certification.com/Unknown/DHIACertWelcome.asp

Log-In Screen



Quality Certification
Services Inc.

Quality Certification Services
P.O. Box 930399
421 S. Nine Mound Rd.
Verona, WI 53593
Phone: 608-848-6455 - Fax: 608-848-7675
E-mail: sjsiever@dhia.org

Welcome To Quality Certification Services, Inc.

Please Enter Your User ID and Password

User ID:

Password:

Done

Internet

100%

CAPITAL
Laboratory Services

Main Menu

Quality Certification Services, Inc.

Welcome Lancaster DHIA Lab Lab Code 824 To Our Web Site

Unknown entry available Monday, June 09, 2008 thru Friday, June 13, 2008 at 11:59:00 PM Eastern

Current Batch Selected is 127
Please Make Selection

Select Batch
Change Lab Info
Manage Email Accounts
Test Instrument Identification
Sample Unknown Entry
OffLine Sample Unknown Entry
Batch Entry Confirmation
Batch Certification Report
Email Batch Certification Report
Batch Comparison Report
Test Instrument History
LogOff

[Return To Login Page](#)

Batch Selection

Quality Certification Services, Inc.

**Lancaster DHIA Lab
Lab Code 824**

Batch 127

Select the Batch from the dropdown list you wish to change to, then Submit

Batch 127	6/9/2008	▼
Batch 127	6/9/2008	▲
Batch 126	5/12/2008	
Batch 125	4/14/2008	
Batch 124	3/17/2008	
Batch 123	2/11/2008	
Batch 122	1/14/2008	
Batch 121	12/10/2007	
Batch 120	11/12/2007	
Batch 119	10/15/2007	
Batch 118	9/10/2007	
Batch 117	8/13/2007	
Batch 116	7/16/2007	
Batch 115	6/11/2007	
Batch 114	5/14/2007	
Batch 113	4/9/2007	
Batch 112	3/12/2007	
Batch 111	2/12/2007	
Batch 110	1/8/2007	
Batch 109	12/11/2006	
Batch 108	11/13/2006	
Batch 107	10/9/2006	
Batch 106	9/11/2006	
Batch 105	8/14/2006	
Batch 104	7/17/2006	
Batch 103	6/12/2006	
Batch 102	5/8/2006	
Batch 101	4/10/2006	
Batch 100	3/13/2006	
Batch 99	2/13/2006	
Batch 98	1/9/2006	

[Return To Menu Without Selecting](#)

Main Menu

Quality Certification Services, Inc.

Welcome Lancaster DHIA Lab Lab Code 824 To Our Web Site

Unknown entry available Monday, June 09, 2008 thru Friday, June 13, 2008 at 11:59:00 PM Eastern

Current Batch Selected is 127
Please Make Selection

Select Batch
Change Lab Info
Manage Email Accounts
Test Instrument Identification
Sample Unknown Entry
OffLine Sample Unknown Entry
Batch Entry Confirmation
Batch Certification Report
Email Batch Certification Report
Batch Comparison Report
Test Instrument History
LogOff

[Return To Login Page](#)

Test Instrument Identification

Quality Certification Services, Inc.

Lancaster DHIA Lab Instruments

B2500 A	Butterfat and Protein	▼
B2500 B	Butterfat and Protein	▼
Chemspec 150	Milk Urea Nitrogen	▼
SCC 500 A Blue	Somatic Cell Count	▼
SCC 500 A Red	Somatic Cell Count	▼
SCC 500 B Blue	Somatic Cell Count	▼
SCC 500 B Red	Somatic Cell Count	▼
	Butterfat and Protein	▼
	Butterfat and Protein	▼

[Return Without Changing](#)

Main Menu

Quality Certification Services, Inc.

Welcome Lancaster DHIA Lab Lab Code 824 To Our Web Site

Unknown entry available Monday, June 09, 2008 thru Friday, June 13, 2008 at 11:59:00 PM Eastern

Current Batch Selected is 127
Please Make Selection

Select Batch
Change Lab Info
Manage Email Accounts
Test Instrument Identification
Sample Unknown Entry
OffLine Sample Unknown Entry
Batch Entry Confirmation
Batch Certification Report
Email Batch Certification Report
Batch Comparison Report
Test Instrument History
LogOff

[Return To Login Page](#)

Sample Unknown Entry

[Quality Certification Services, Inc.](#)

Lancaster DHIA Lab

Test Entry

Select	Offline	
<input checked="" type="radio"/>	<input type="radio"/>	B2500 A Butterfat and Protein
<input type="radio"/>	<input type="radio"/>	B2500 B Butterfat and Protein
<input type="radio"/>	<input type="radio"/>	Chemspec 150 Milk Urea Nitrogen
<input type="radio"/>	<input type="radio"/>	SCC 500 A Blue Somatic Cell Count
<input type="radio"/>	<input type="radio"/>	SCC 500 A Red Somatic Cell Count
<input type="radio"/>	<input type="radio"/>	SCC 500 B Blue Somatic Cell Count
<input type="radio"/>	<input type="radio"/>	SCC 500 B Red Somatic Cell Count

[Return Without Selecting](#)



Samples Unknown Entry

[Quality Certification Services, Inc.](#)

Lancaster DHIA Lab

B2500 A

	Butterfat			Protein			
1	<input type="text"/>	13	<input type="text"/>	1	<input type="text"/>	13	<input type="text"/>
2	<input type="text"/>	14	<input type="text"/>	2	<input type="text"/>	14	<input type="text"/>
3	<input type="text"/>	15	<input type="text"/>	3	<input type="text"/>	15	<input type="text"/>
4	<input type="text"/>	16	<input type="text"/>	4	<input type="text"/>	16	<input type="text"/>
5	<input type="text"/>	17	<input type="text"/>	5	<input type="text"/>	17	<input type="text"/>
6	<input type="text"/>	18	<input type="text"/>	6	<input type="text"/>	18	<input type="text"/>
7	<input type="text"/>	19	<input type="text"/>	7	<input type="text"/>	19	<input type="text"/>
8	<input type="text"/>	20	<input type="text"/>	8	<input type="text"/>	20	<input type="text"/>
9	<input type="text"/>	21	<input type="text"/>	9	<input type="text"/>	21	<input type="text"/>
10	<input type="text"/>	22	<input type="text"/>	10	<input type="text"/>	22	<input type="text"/>
11	<input type="text"/>	23	<input type="text"/>	11	<input type="text"/>	23	<input type="text"/>
12	<input type="text"/>	24	<input type="text"/>	12	<input type="text"/>	24	<input type="text"/>
Tot	<input type="text"/>		<input type="text"/>	<input type="text"/>			<input type="text"/>

Monthly Instrument Notes:

[Return Without Updating](#)

Main Menu

Quality Certification Services, Inc.

Welcome Lancaster DHIA Lab Lab Code 824 To Our Web Site

Unknown entry available Monday, June 09, 2008 thru Friday, June 13, 2008 at 11:59:00 PM Eastern

Current Batch Selected is 127
Please Make Selection

Select Batch
Change Lab Info
Manage Email Accounts
Test Instrument Identification
Sample Unknown Entry
OffLine Sample Unknown Entry
Batch Entry Confirmation
Batch Certification Report
Email Batch Certification Report
Batch Comparison Report
Test Instrument History
LogOff

[Return To Login Page](#)

Batch Certification Report

B2500 A
Butterfat

Sample Number	Lab/Instrument		Avg Diff	Instr Results		Prec Stats		Accuracy Stats		
	Ref	Inst		Rep1	Rep2	Range	SD	Reps	IR Mean Diff	
1	3.557	3.564	0.007	3.56	3.58	0.020	0.014	3.570	0.013	
2	3.907	3.909	0.002	3.91	3.90	0.010	0.007	3.905	-0.002	
3	2.990	2.990	0.000	3.01	3.03	0.020	0.014	3.020	0.030	
4	4.153	4.138	-0.015	4.20	4.20	0.000	0.000	4.200	0.047	
5	3.547	3.550	0.003	3.57	3.59	0.020	0.014	3.580	0.033	
6	3.797	3.782	-0.015	3.78	3.79	0.010	0.007	3.785	-0.012	
7	3.707	3.723	0.016	3.74	3.77	0.030	0.021	3.755	0.048	
8	3.223	3.224	0.001	3.26	3.26	0.000	0.000	3.260	0.037	
9	3.640	3.649	0.009	3.68	3.67	0.010	0.007	3.675	0.035	
10	4.297	4.289	-0.008	4.28	4.27	0.010	0.007	4.275	-0.022	
11	4.817	4.800	-0.017	4.75	4.76	0.010	0.007	4.755	-0.062	
12	4.370	4.382	0.012	4.40	4.39	0.010	0.007	4.395	0.025	
			MD	0.000		SDA	0.006		MD	0.014
			SDD	0.011				SDD	0.033	



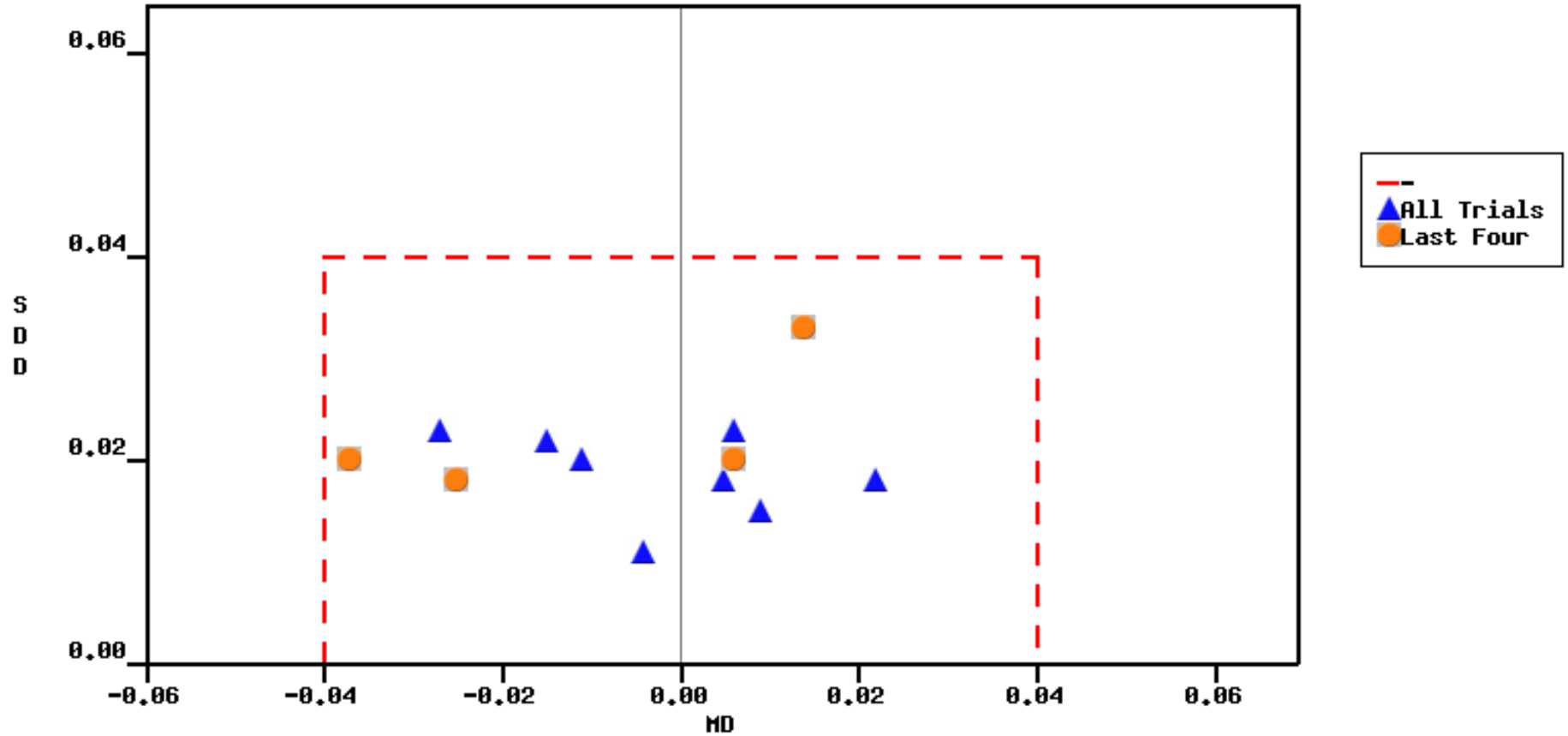
Batch Certification Report

Month	FAT Results		
	MD	SDD	RMD
Jun	-0.011	0.020	0.002
Jul	0.009	0.015	0.008
Aug	-0.027	0.023	0.004
Sep	-0.004	0.011	0.002
Oct	0.005	0.018	-0.002
Nov	0.006	0.023	-0.004
Dec	0.022	0.018	0.002
Jan	-0.015	0.022	-0.002
Feb	-0.037	0.020	-0.004
Mar	0.006	0.020	-0.002
Apr	-0.025	0.018	-0.007
May	0.014	0.033	-0.006

Changed cell here!

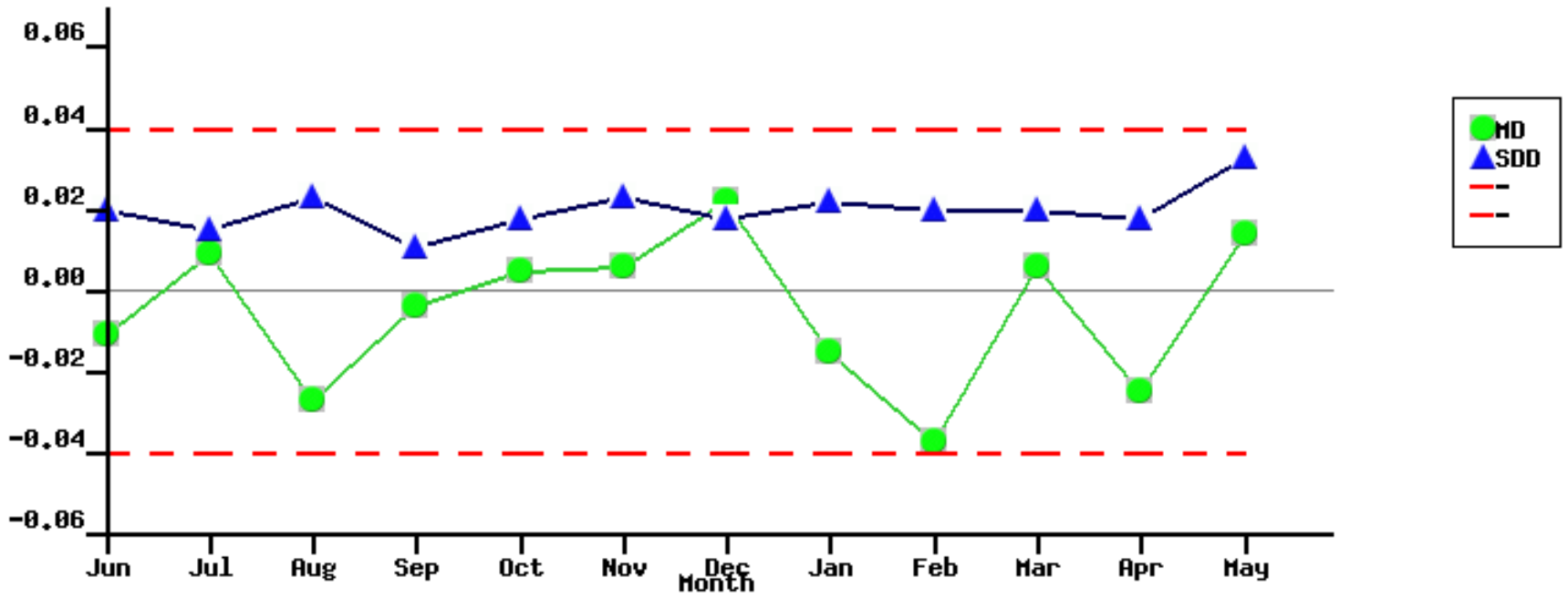
Batch Certification Report

FAT Results



Batch Certification Report

FAT Results



Main Menu

Quality Certification Services, Inc.

Welcome Lancaster DHIA Lab Lab Code 824 To Our Web Site

Unknown entry available Monday, June 09, 2008 thru Friday, June 13, 2008 at 11:59:00 PM Eastern

Current Batch Selected is 127
Please Make Selection

Select Batch
Change Lab Info
Manage Email Accounts
Test Instrument Identification
Sample Unknown Entry
OffLine Sample Unknown Entry
Batch Entry Confirmation
Batch Certification Report
Email Batch Certification Report
Batch Comparison Report
Test Instrument History
LogOff

[Return To Login Page](#)

Batch Comparison Report

FAT Comparison

